

Sacred Spaces

Yvette Gellis

Sacred Spaces

Yvette Gellis



Sacred Spaces, 2021. Created and Painted by- Yvette Gellis, Annenberg Community Beach House, Santa Monica, CA.

Yvette Gellis operates at the crossroads of the visceral and the intellectual. A departure from her notable abstract paintings and installations, in *Sacred Spaces* she creates a meditative interpretation of the natural world while traversing the ever-shifting boundaries between representation and abstraction. Her first public art project at The Annenberg Community Beach House, *Sacred Spaces* is an eye-catching mural with the intent to inspire well being, recuperation, restoration, imagination, peacefulness, whimsy, and love of the natural world. The commission was to design a mural to be installed along the ocean-facing Beach House walkway that would create a blissful, harmonious experience. Yvette's painting, *Sacred Spaces*, does just that. An abstracted landscape that depicts a whole day's view of the mountains and sea from dawn to dusk, *Sacred Spaces* reflects and refracts the beach and landscape the viewer is standing in.

In Yvette's words, "It's about the "WALK", from one end to the other, from dawn to dusk as an immersive experience to uplift human consciousness in a space where we can all get along and feel love for one another and our natural environment". When she paints, Yvette enters the painting. She wanders the paths and follows the map of her imagination, exploring the landscape she is creating in real time. Yvette's hope is that, "passersby will come across this artwork on their daily jog or as they stroll by the water and be drawn into the work as I was when I created it. I want them to linger in the landscape a bit and experience the restorative power of art."



Artwork is commissioned as part of Out of the Blue, a program of the Annenberg Community Beach House and Santa Monica Cultural Affairs.

Shannon Daut, Manager, Santa Monica Cultural Affairs
Nan Friedman, Manager, Annenberg Community Beach House
Designed by- Nandalal Sarkar, India.
Panaramic Photo by- Deana Marconi



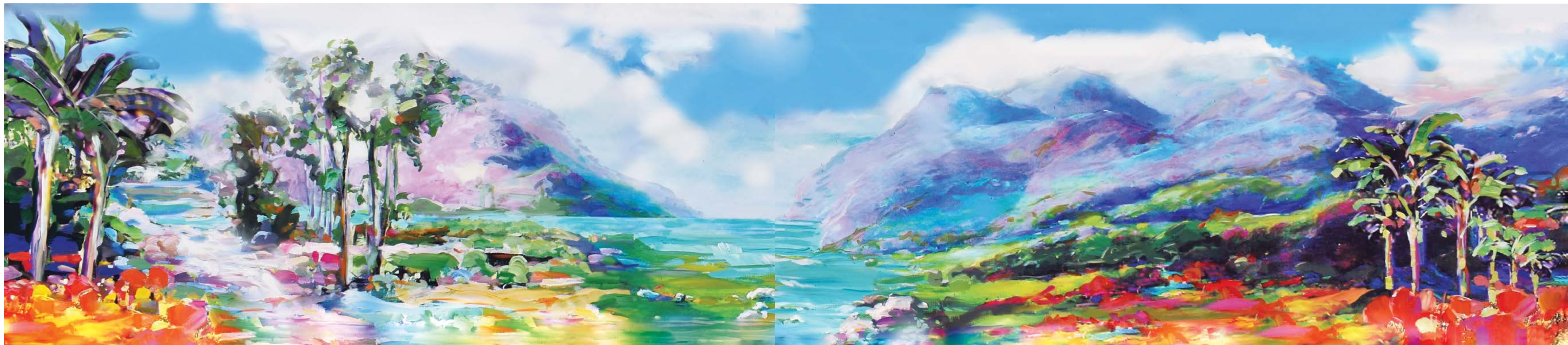
Sacred Spaces 1, 2021. Latex and Acrylic on Printed Vinyl, 39 x 257 inches



Sacred Spaces 2, 2021. Latex and Acrylic on Printed Vinyl, 39 x 194 inches



Sacred Spaces 3, 2021. Latex and Acrylic on Printed Vinyl, 39 x 194 inches



Sacred Spaces 4, 2021. Latex and Acrylic on Printed Vinyl, 39 x 194 inches



Sacred Spaces 5, 2021. Latex and Acrylic on Printed Vinyl, 39 x 194 inches



Sacred Spaces 6, 2021. Latex and Acrylic on Printed Vinyl, 39 x 194 inches



Sacred Spaces 7, 2021. Latex and Acrylic on Printed Vinyl, 39 x 180 inches



Sacred Spaces 8, 2021. Latex and Acrylic on Printed Vinyl, 39 x 143 inches



Sacred Spaces 9, 2021. Latex and Acrylic on Printed Vinyl, 39 x 194 inches



Sacred Spaces 10, 2021. Latex and Acrylic on Printed Vinyl, 39 x 194 inches



Sacred Spaces 11, 2021. Latex and Acrylic on Printed Vinyl, 39 x 194 inches



Sacred Spaces 12, 2021. Latex and Acrylic on Printed Vinyl, 39 x 194 inches



Sacred Spaces 13, 2021. Latex and Acrylic on Printed Vinyl, 39 x 194 inches



Sacred Spaces 14, 2021. Latex and Acrylic on Printed Vinyl, 39 x 194 inches



Sacred Spaces 15, 2021. Latex and Acrylic on Printed Vinyl, 39 x 194 inches



Sacred Spaces 16, 2021. Latex and Acrylic on Printed Vinyl, 39 x 194 inches



Sacred Spaces 17, 2021. Latex and Acrylic on Printed Vinyl, 39 x 194 inches



Sacred Spaces 18, 2021. Latex and Acrylic on Printed Vinyl, 39 x 178 inches



Sacred Spaces 19, 2021. Latex and Acrylic on Printed Vinyl, 39 x 194 inches



Sacred Spaces 20, 2021. Latex and Acrylic on Printed Vinyl, 39 x 194 inches



Sacred Spaces 21, 2021. Latex and Acrylic on Printed Vinyl, 39 x 194 inches



Sacred Spaces 22, 2021. Latex and Acrylic on Printed Vinyl, 39 x 194 inches



Sacred Spaces 23, 2021. Latex and Acrylic on Printed Vinyl, 39 x 145 inches



Yvette Gellis

When I was commissioned by the City of Santa Monica for a site-specific public installation promoting harmony, peace and blissfulness, I was truly delighted. It had been a tough year given the current combination of a worldwide pandemic and political turmoil, so it was a chance to try something new that would be an uplifting gift to the community. Isolation during the pandemic took me deep into the wilderness where I found the serenity and peace healing. The beauty we have all around us every day is extraordinary and we tend to take it all for granted. The paintings represent California Sacred Spaces we need to protect. Although I present myself as an abstract painter, my roots are in landscape painting and the daily excursions propelled me back to the landscape.

The site was in front of the Annenberg Community Beach House, a job that would require 26 panels - 450 feet in total - and each and every one of them slightly different in size. I painted the landscapes and uploaded them onto the computer rearranging and merging with some of my own photography. The “new” images were then printed on UV-protected vinyl banners, ideal for the outdoors. Each banner was repainted again in my studio with outdoor latex house paint. Once all the panels were hung on site, I re-painted them a third time to make sure they merged and transitioned from one to the other - from dawn to dusk. The viewer must walk the 450 feet from one end to the other to discover the immersive experience and the feeling of hope or joy it conveys. Demonstrating the restorative power of art, the work strives to provide a place where we can all agree and get along.

I was pleased to dedicate the work to Robert Seldon Duncanson who was born exactly 300 years ago to this year. As a black American artist, pre-Civil War, the significance does not go without note. Hopefully, we can finally begin to heal and make the progress we should have made 300 years ago.

Yvette Gellis MFA 2008, Claremont Graduate University, has exhibited nationally and internationally including museum venues and public exhibition spaces. Her work has been written about in numerous publications and her work is included in many notable private and public collections.

For more info: www.yvettegellis.com



Annenberg Community
Beach House
AT SANTA MONICA STATE BEACH



City of
**Santa
Monica**

**ART
SAMO**

Artwork is commissioned as part of Out of the Blue, a program of the Annenberg Community Beach House and Santa Monica Cultural Affairs.